



5400 Series

Door furniture



The 5400 Series narrow stile furniture is designed for use in commercial applications, including exterior and interior doors for retail/shop front, educational, governmental, medical and public buildings. The narrow plate is ideal for use on narrow timber or aluminium stiles.

With a range of modern and contemporary lever designs, the 5400 Series will complement any décor. The handing mechanism of this series allows the furniture to be handed on site, by simply rotating the handle in the preferred direction of use prior to installing on the door .

Features

- Constructed of commercial grade quality components including forged brass handles and extruded brass plates
- Heavy duty compression spring provides a smooth, positive return action of the lever and eliminates droop, extending the life of the product
- Symmetrically designed levers are able to be handed on site within seconds, with a simple 180° rotation of the lever in the preferred direction of use prior to installation.
- Designed for use with Legge 995 narrow stile mortice locks, the 5400 Series can also be supplied to suit Legge 990MF mortice locks
- The 30 year warranty provides specifiers and users with assured quality and performance

Specification guide

Function	Lever	Finish
refer following pages	refer following pages	Antique bronzeA Chrome plate C Oil rubbed bronze ORB Polished brass P Polished brass unlacquered PU Satin chrome plate S Satin black chrome SBC Satin brass SB Satin brass unlacquered SBU

1. Function

Select the desired function e.g. External plate with cylinder 5400/

2. Lever

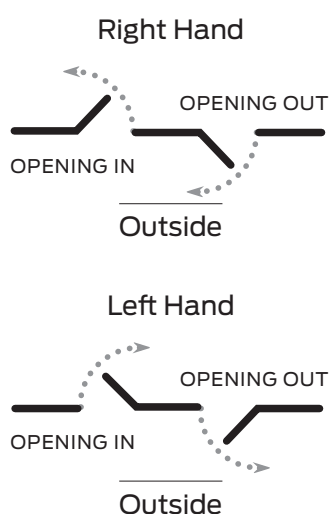
Select the required lever design - e.g. Gaudi #20 5400/20

3. Finish

Select the desired finish e.g. Satin chrome plate 5400/20S

Note: For furniture to suit 990MF locks add M to specification guide after function - Applies to functions; External 00, 04, 10, 14, Internal 01, 03, 11, 13

Handing guide



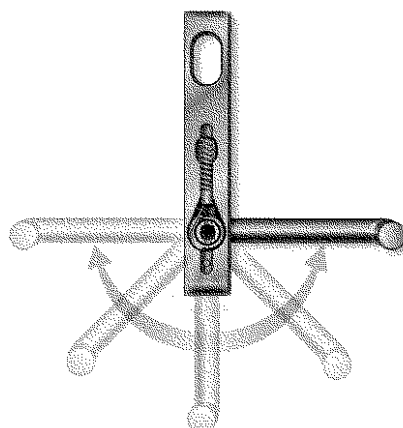
Specifications

Door type	Timber or metal
Door	32mm to 50mm
Spindle size	7.6mm
Compatible locks/latches	Legge 995MF Series mortice locks Legge 990MF Series mortice locks for timber doors
Fixing centres	159mm
Fixing	Back to back, external plates concealed fixing, screws supplied with exterior plates only, screw length 75mm
Materials	Levers — forged & extruded brass Plate — extruded brass
Finishes	Antique bronze, Chrome plate, Oil rubbed bronze, Polished brass, Polish brass unlacquered, Satin chrome plate, Satin black chrome, Satin brass, and Satin brass unlacquered
Warranty	30 year mechanical 10 year finish for C, P, PU, S, SB and SBU 1 year finish A, ORB, and SBC

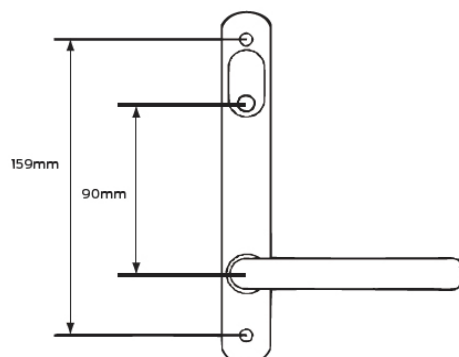
Lever handing

Handing is as simple as a turn of the handle. The handing mechanism of the Legge 5300 Series eliminates the need to specify the handing of symmetrically designed levers. Handing of the lever is as simple as rotating the handle 180° as illustrated. This mechanism removes the need to have stops and handing screws, thus saving time and money.

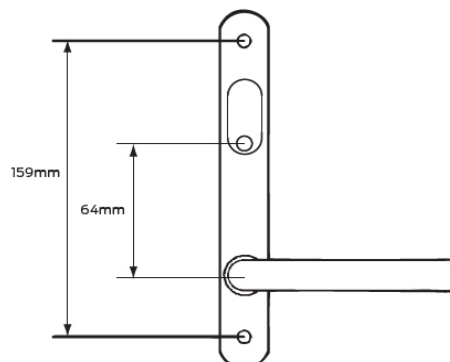
Note: For asymmetrically designed levers handing can not be reversed, and will require left or right handing to be specified when ordering



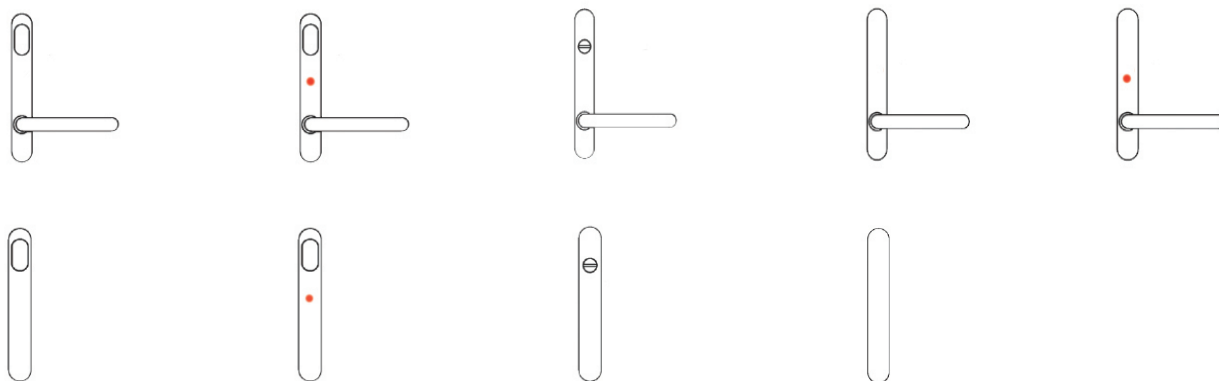
For 995MF Series mortice lock



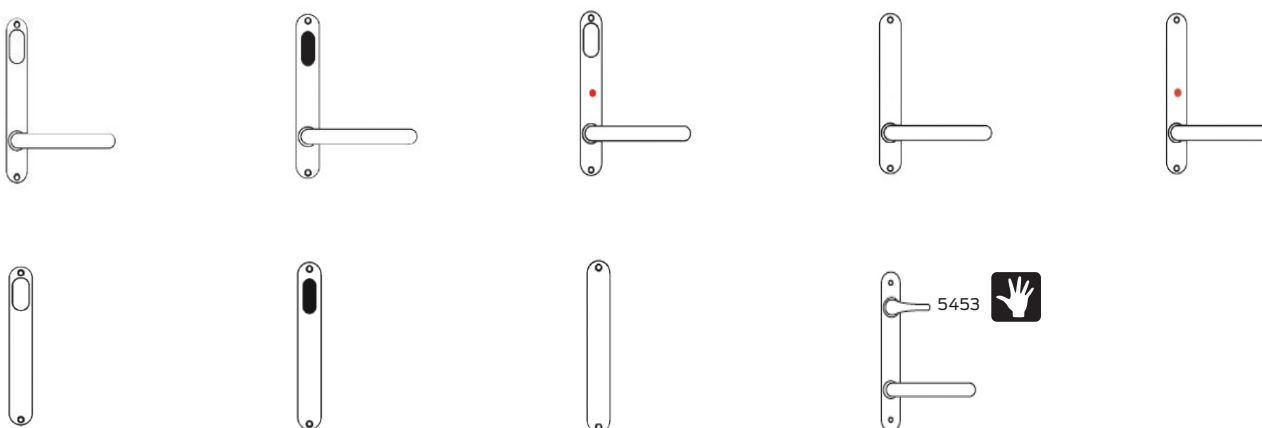
For 990MF Series mortice lock



External plates



Internal plates



Legend

Turn snib

Cylinder hole

Emergency button

Accessible Turn



LED



Large turn



Depicted in RH



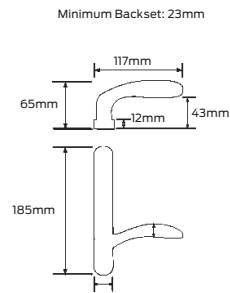
5453



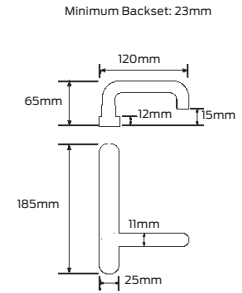
Denotes handed lever

Legge 5400 Series levers

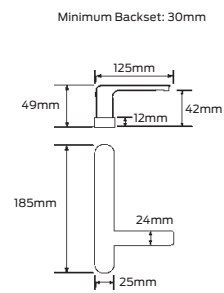
Alessandro #55



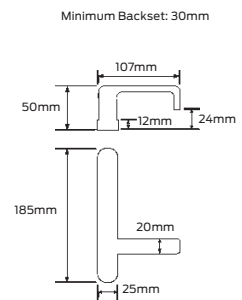
Alpha #29



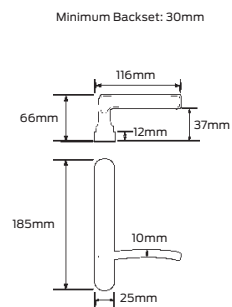
Angelo #57



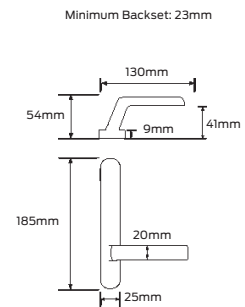
Bergen



Chagall #51

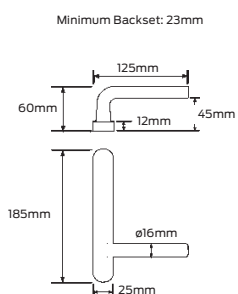


Cisa #59

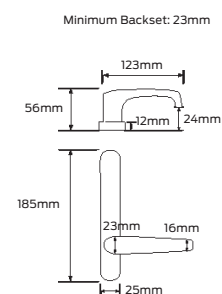


Legge 5400 Series levers

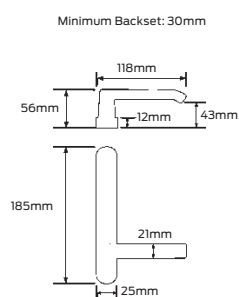
Diablo #15



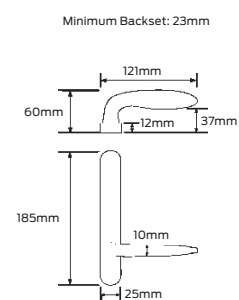
Ergo #62



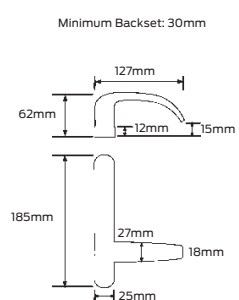
Leonardo #12



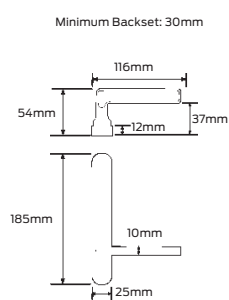
Monet #50



Neptune

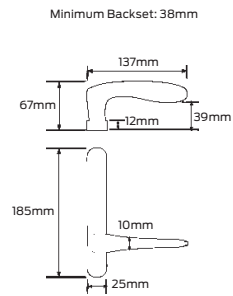


Renoir #52

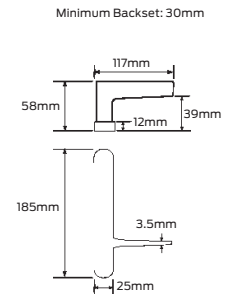


Legge 5400 Series levers

Rubens #56



Salvador #27



Trilo #61

